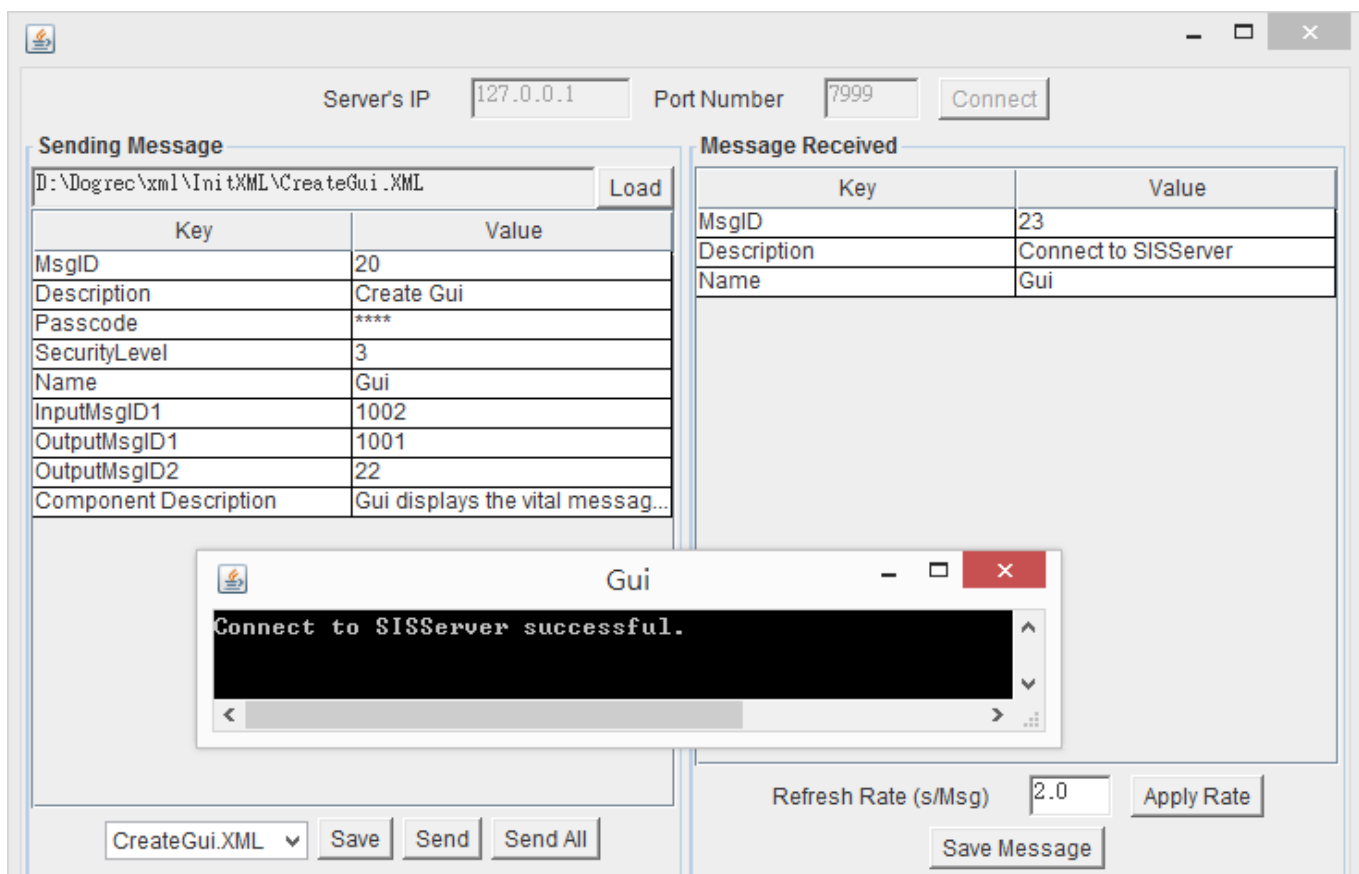


Start SIS environment on my PC.



Run prjRemote.exe

Create the components you implemented by entering the correct message 20 through prjRemote, using a script to get them started, and then entering the correct connect messages.



Server's IP: Port Number:

Sending Message

D:\Dogrec\xml\InitXML\CreateDogRecMonitor.XML

Key	Value
MsgID	20
Description	Create DogRecMonitor
Passcode	****
SecurityLevel	3
Name	DogRecMonitor
InputMsgID1	1001
OutputMsgID1	1002
Component Description	DogRec Monitor checks for do...

Message Received

Key	Value
MsgID	23
Description	Connect to SISServer
Name	DogRecMonitor

DogRecMonitor

```
Connect to SISServer successful.
```

Refresh Rate (s/Msg):

CreateDogRecMonitor.XML

Use prjRemote to send the correct message to your component(s).

Use prjRemote to simulate the generation of the output message(s).

Server's IP: Port Number:

Sending Message

D:\Dogrec\xml\DataXML\GUIToDog.XML

Key	Value
MsgID	1001
Description	GUIToDog

Message Received

Key	Value
MsgID	23
Description	Connect to SISServer
Name	DogRecMonitor

DogRecMonitor

```
Connect to SISServer successful.
Message MsgName:GUIToDog MsgID:1001 received, start processing.
```

Refresh Rate (s/Msg):

GUIToDog.XML

Server's IP

127.0.0.1

Port Number

7999

Connect

Sending Message

D:\Dogrec\xml\Data\XML\DogToGui.XML

Load

Key	Value
MsgID	1002
Description	DOGToGUI
DogDataStream	****

Message Received

Key	Value
MsgID	23
Description	Connect to SISServer
Name	DogRecMonitor

Gui

Connect to SISServer successful.
Message MsgName:DogToGui MsgID:1002 received, start processing.

DogToGui.XML

Save

Send

Send All

Refresh Rate (s/Msg)

2.0

Apply Rate

Save Message