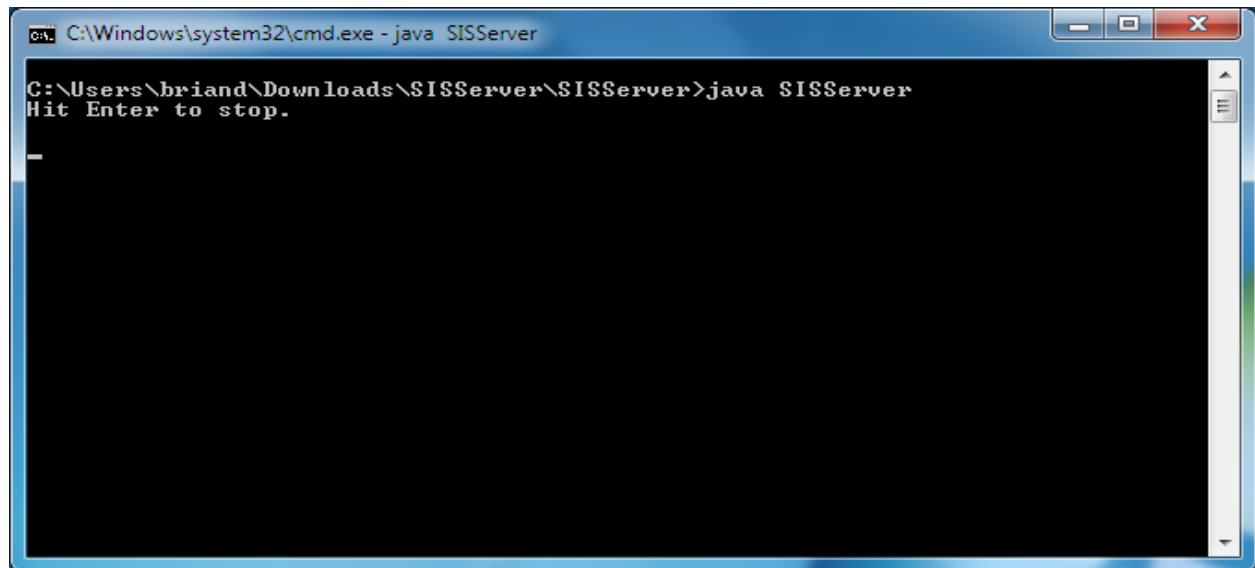


Judicael Briand Djoko - MS2 Report

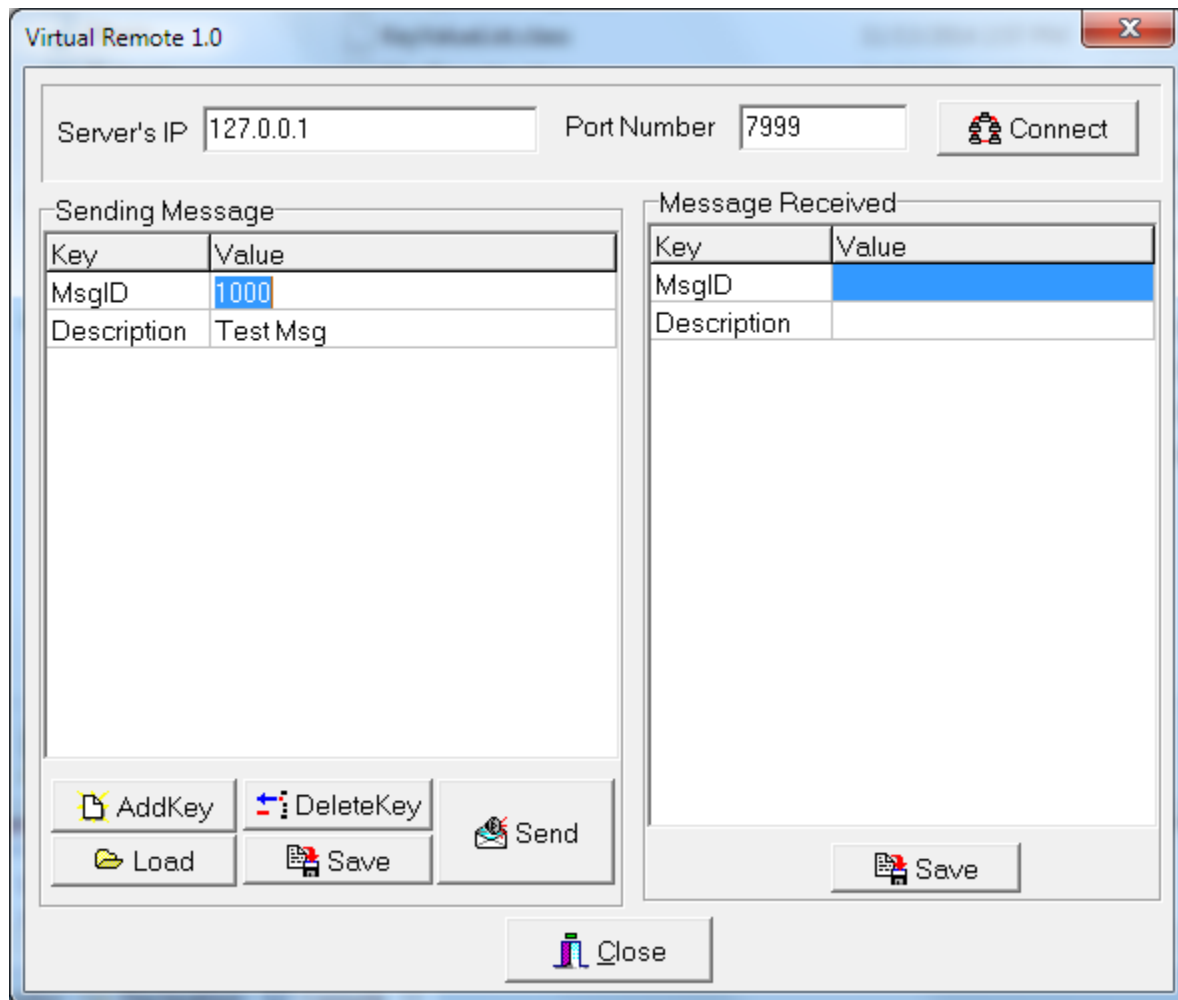
Starting the SIS Server



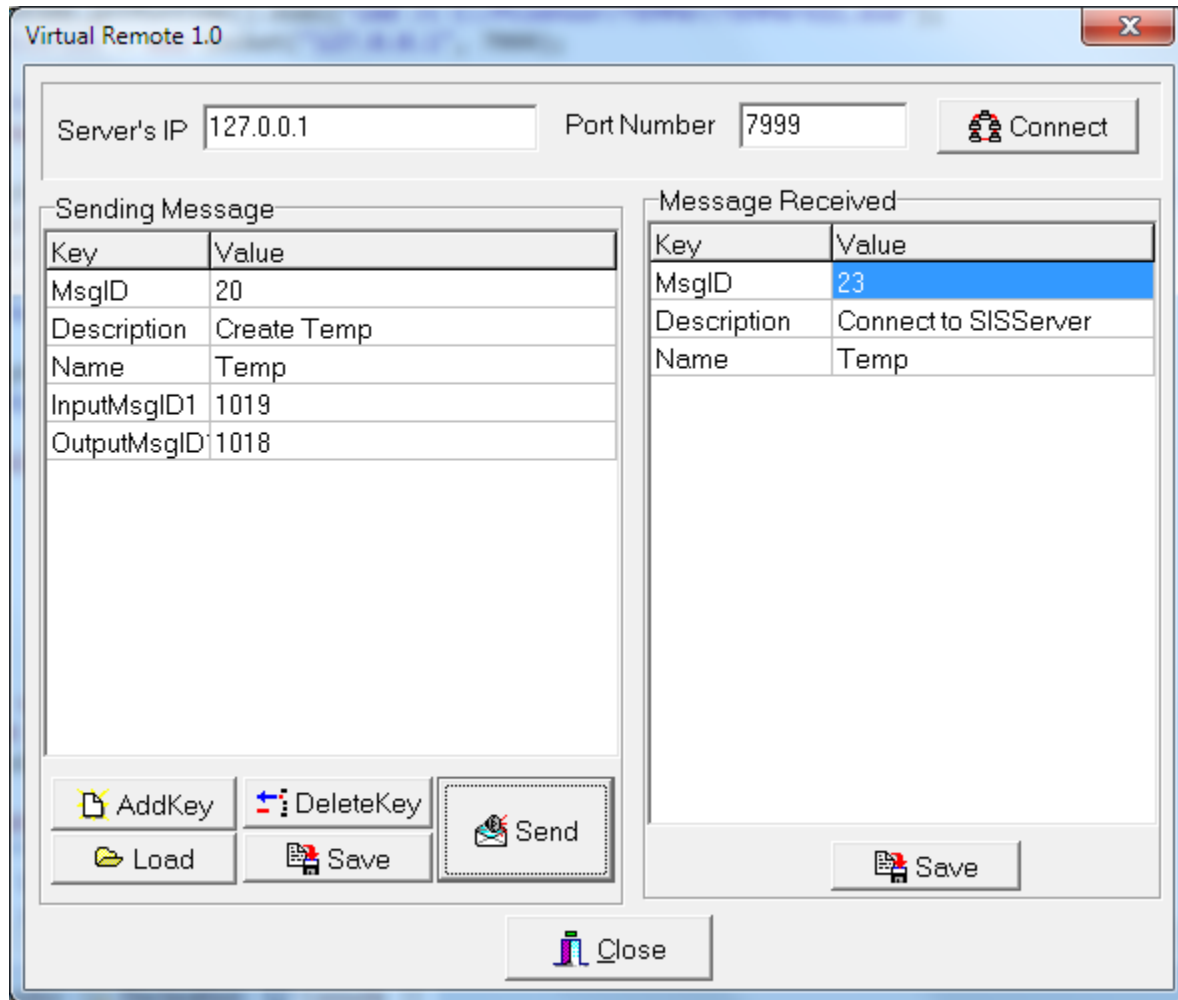
```
C:\Windows\system32\cmd.exe - java SISServer

C:\Users\briand\Downloads\SISServer\SISServer>java SISServer
Hit Enter to stop.
```

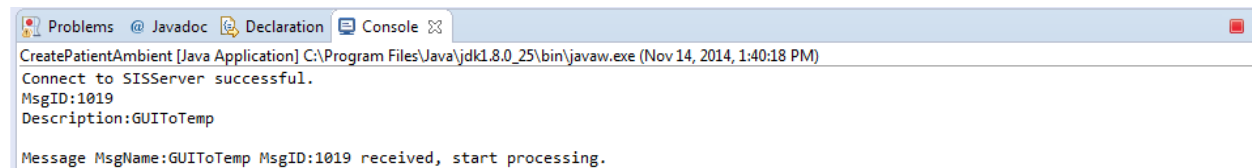
Starting up the pjremote and connecting to the SIS Server



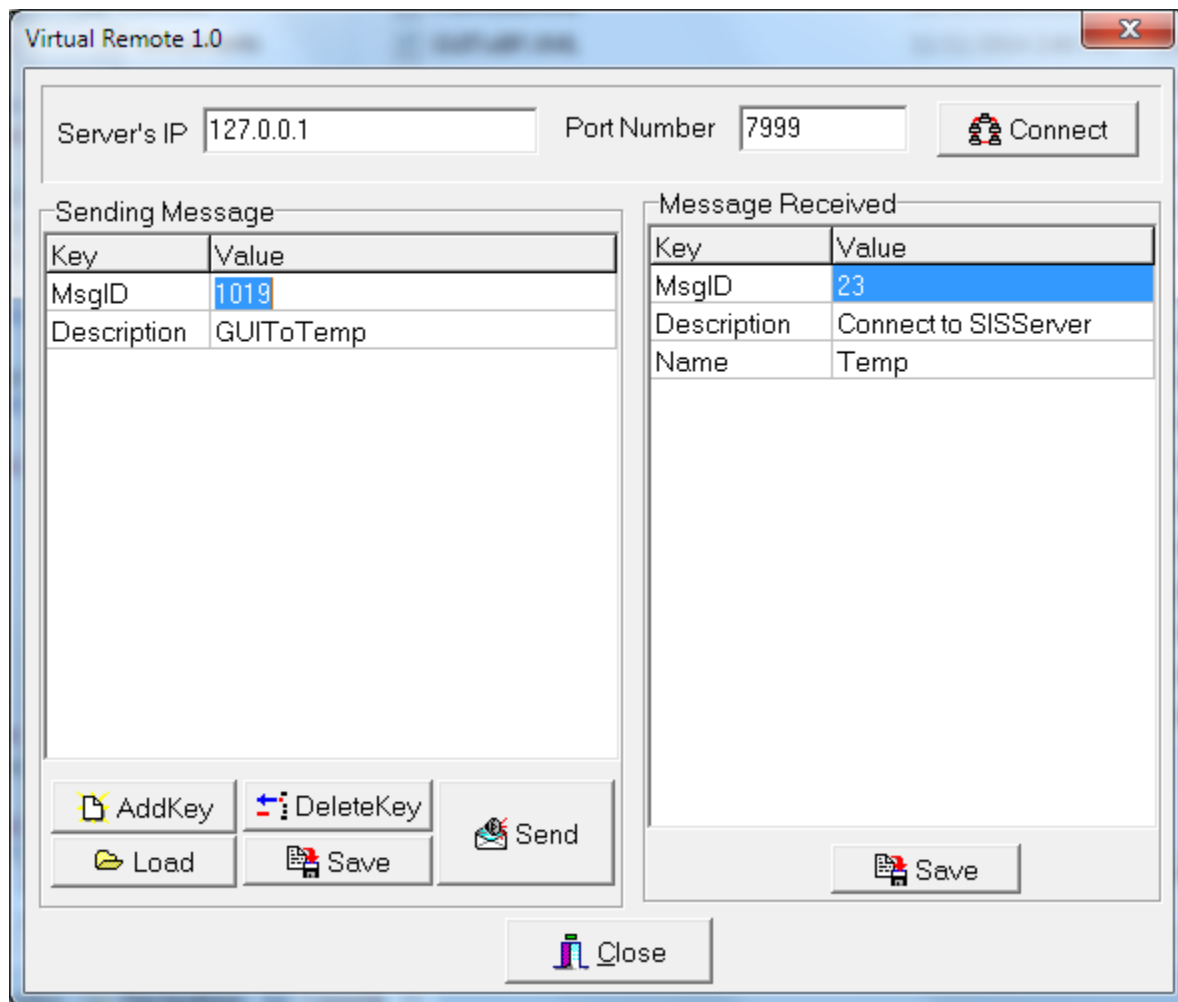
Sending the message to create Temp component



Component Created



Send a data message to created component



Component responds to message

