

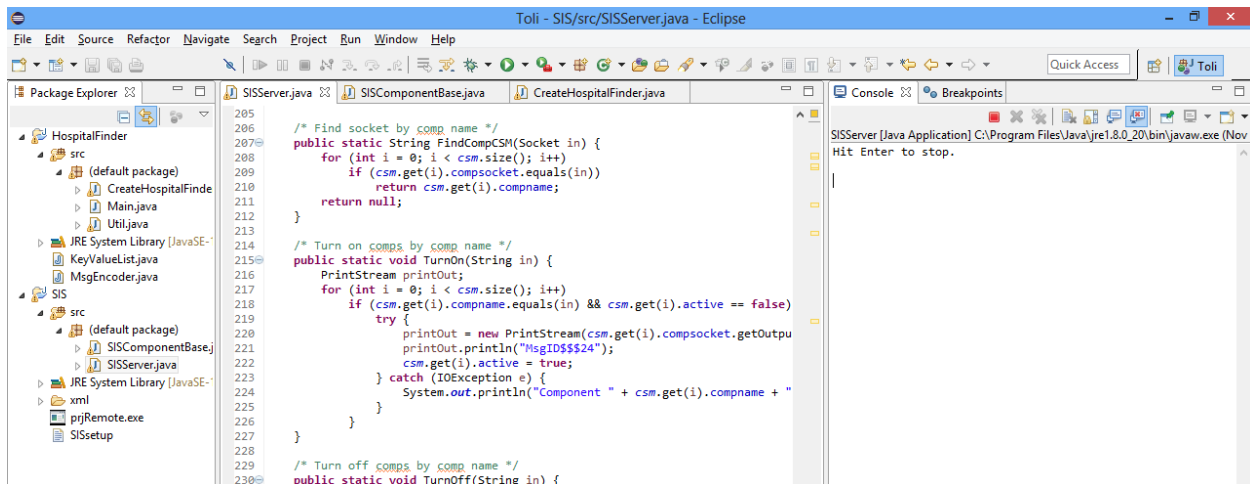
CS2310: Exercise 4

Anatoli Shein

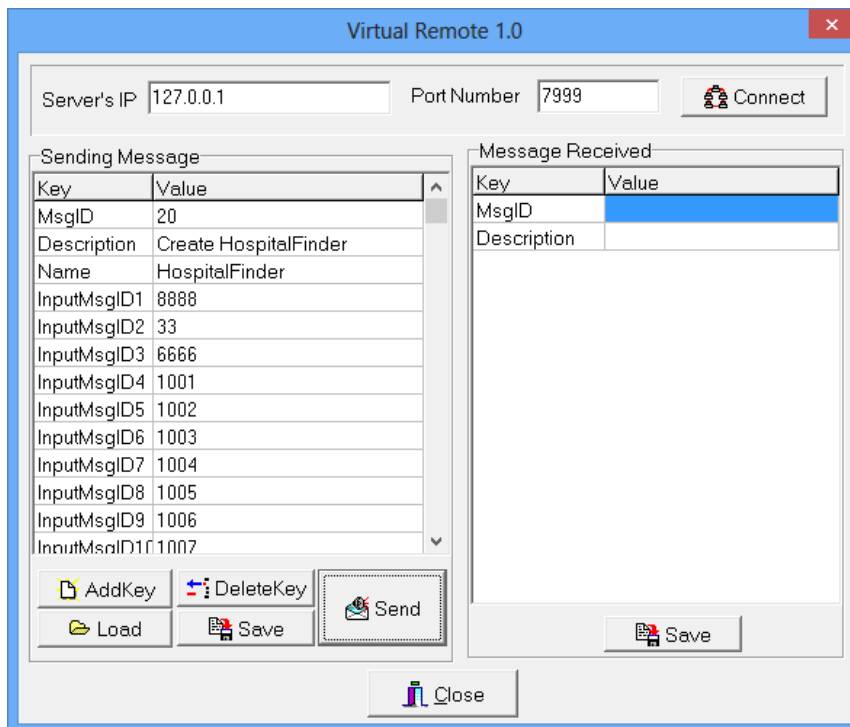
aus4@pitt.edu

I have set up the SIS system to work in the eclipse environment.

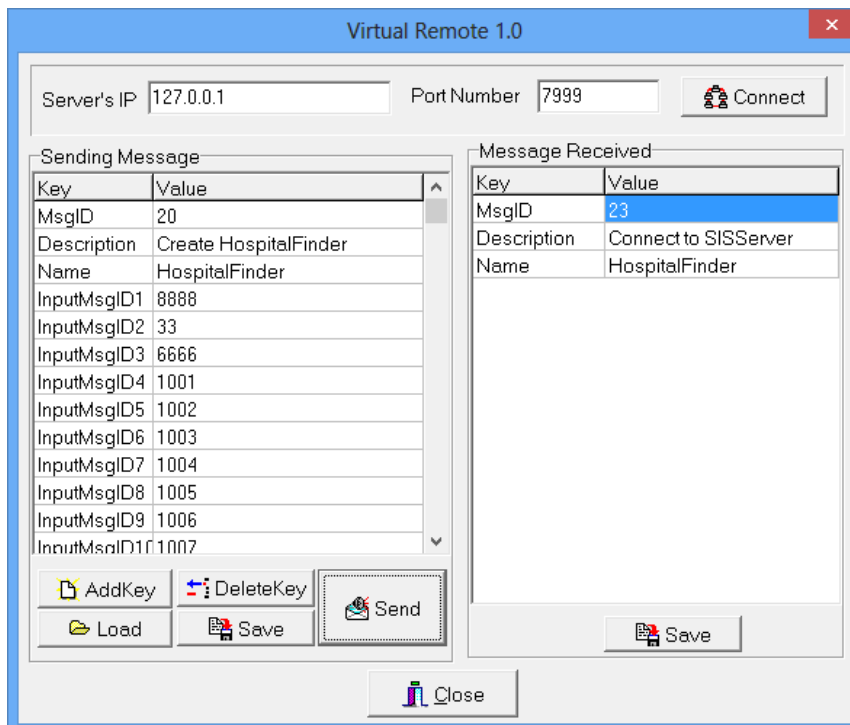
First I start the server:



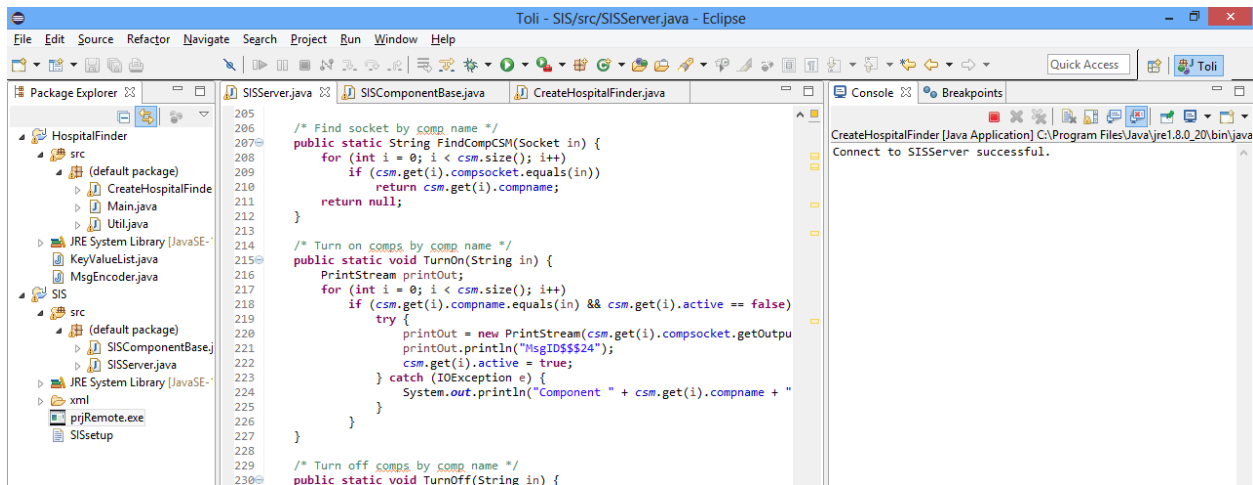
Then I load a message 20 to initialize my HospitalFinder component and send it to the server:



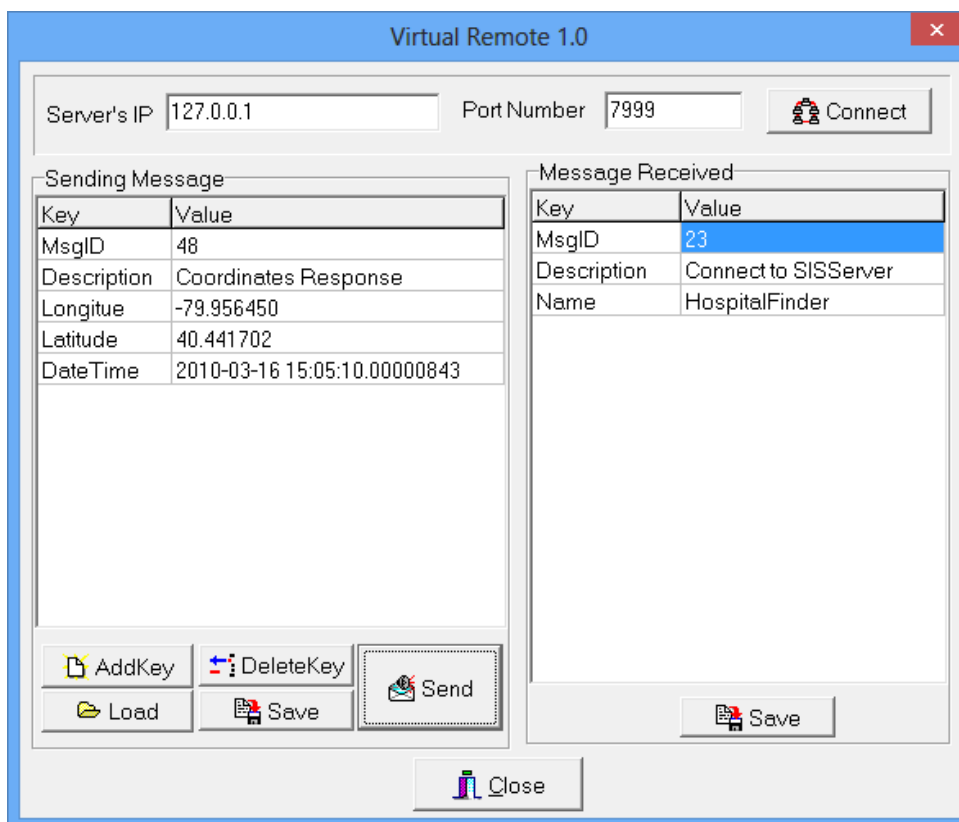
Now I am starting my component from eclipse. We can see that my component just generated message 23: Connect to SISServer in prjRemote:



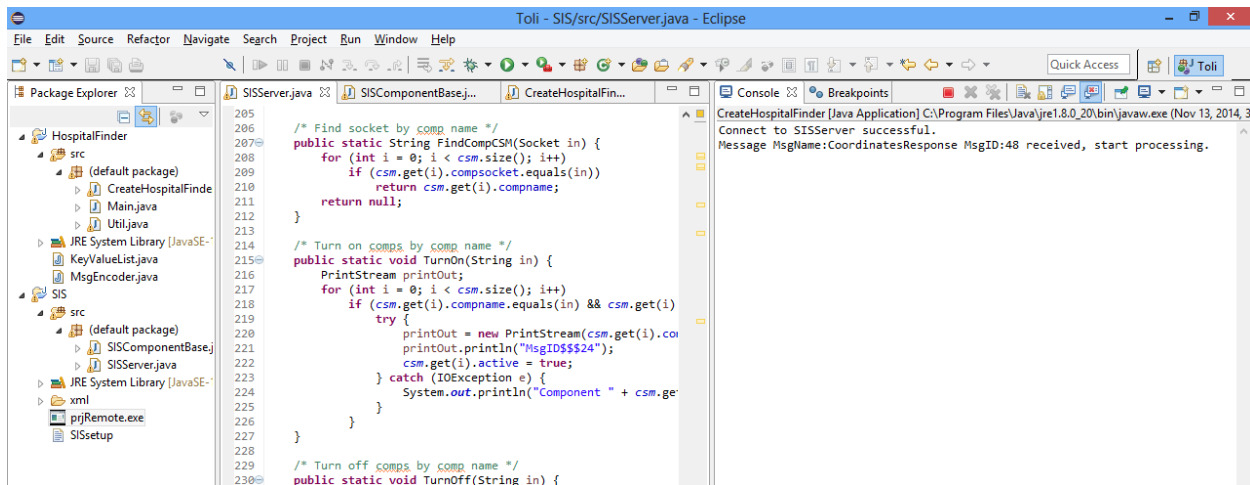
And in eclipse we see that Hospital Finder component successfully connected:



Now I can simulate sending data messages using prjRemote. First data message that I send is message 48: CoordinatesResponse (the actual message that my component will be processing):



And in the terminal we see that message was indeed received by my component:



Now Hospital Finder can start processing the message.

Same way my component can receive other messages: 32, 42, 36, 34, 38.

In this case these messages are simulated by projRemote, however in the final system these messages will be coming from other components.